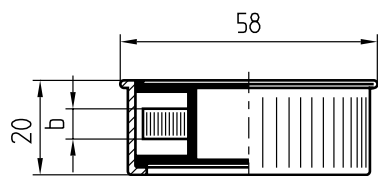


Z93/...

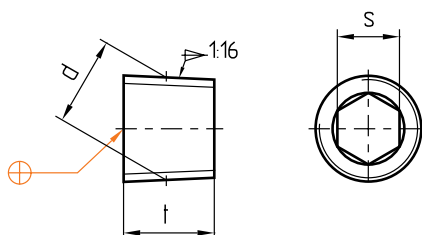
Mat.: Teflon® (PTFE)



min. °C	max. °C	L [mm]	b	Nr./No.
-160	250	12	6,5	Z93/12x 6,5
			13	12x13

Z94/...

Mat.: 2.0401
≈ DIN 906



s	t	d	Nr./No.
4	8	M 8x0,75	Z94/ 8x0,75
5		M 10x1	10x1
6		M 12x1,5	12x1,5
7	10	M 14x1,5	14x1,5

s	t	d	Nr./No.
5	8	R1/8	Z94/R1/8
7	10	R1/4	R1/4
8		R3/8	R3/8
10		R1/2	R1/2

This is trial version
www.adultpdf.com